

# **CULTURE, TOURISM & ENTERPRISE OVERVIEW AND SCRUTINY COMMITTEE**

## **Agenda Item 39**

Brighton & Hove City Council

**Subject:** Information note: 16 to 18 year olds who are not in education, employment or training (NEET)

**Date of Meeting:** 25 November 2010

**Contact Officer:** Name: Richard Miles Tel: 29-2344  
E-mail: richard.miles@brighton-hove.gov.uk

**Wards Affected:** All

### **FOR GENERAL RELEASE**

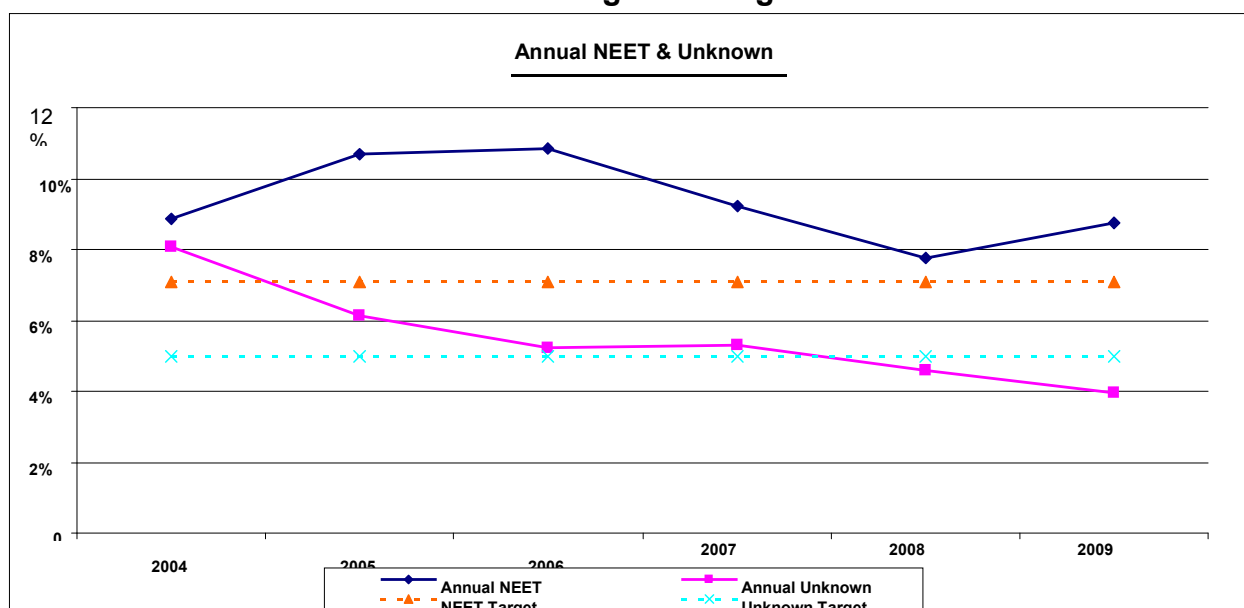
#### **1. SUMMARY**

- 1.1 This is information for the committee regarding the latest position on 16 to 18 year olds who are not in education, employment or training (NEET).

#### **2 NEET**

- 2.1 The annual 16 – 18 NEET figures are based on the official Department of Education return of the average adjusted NEET percentage over November/December/January. From a high of over 10% in 2005 and 2006, the NEET figure has steadily improved, almost meeting the target in 2008.

## Annual NEET and Not Knowns: Trend against Targets 2004 – 2009



- 2.2 The result for 2009 was 8.8%; this equates to 593 young people across the three months. This was above the statistical neighbour average of 7.0%, and above the England average of 6.4%. However, rates in Southampton and Portsmouth, similar southeast cities, were higher at 9.2% and 10.5% respectively.
- 2.3 The annual figures for 2010 are not yet in – they will be calculated as an average of the coming November, December and January figures. However, the latest figures for October 2010 show a percentage NEET rate of 7.6%, down on September 2010 (10.33%) and an improvement on the October 2009 figure which was 8.11%. The October percentage represents 512 16 to 18 year old young people.
- 2.4 The current economic conditions appear to be contributing to the rise, with many of the NEET group falling out of employment rather than training. Jobcentre Plus report that the employment situation within the city has worsened considerably with almost no vacancies offered to under 18s. However, the rate did fall for a period to 7.9% in April 2010. This is probably due to the January Guarantee initiative, which was successful in placing young people registering as NEET in December and January on Entry to Employment (E2E) work scheme programmes.
- 2.5 The council is currently consulting with partners and staff on future arrangements for the Connexions service and information will be provided to the CYPT Board when this process has been completed.